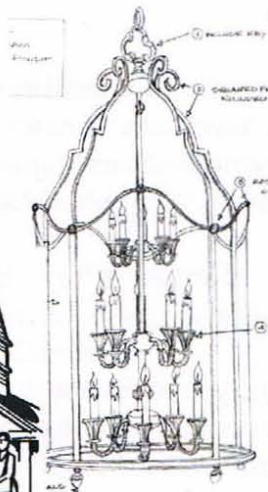


Immanuel Lutheran

Now into Tomorrow



Rejuvenation Committee

Articles

(ri joove nays hen comm mit tee) - a group chosen to educate, gather information and provide a range of recommendations as to the physical elements within Immanuel's main sanctuary by the 2011 Annual Congregational Meeting.

January 7, 2011

Dear Friends in Christ,

The *Rejuvenation Committee* has gathered information since its approval by the Council in February 2010, surrounding the physical space, sight and sound within Immanuel's sanctuary. Committee meetings, articles on Church-designs, pictures of Church-designs, a tour of a local church, Temple talks, newsletter articles, a display in the Overflow Room, and comments from you have allowed the Committee to gather the information.

The gathered information refined the physical elements into eight topics that have been share with you; namely Organ, HVAC/Electrical/ADA Requirements, Stained glass windows and paintings, Quiet room/nursery, Lighting, Altar/altar steps, Sound & projection technology, and Parking.

The information from these eight topics are compiled in this booklet, along with five different floor plans that have been advanced.

I urge you to review this booklet, as well as the five different floor plans. The booklet will be available to review on the Church website and will be distributed at the early and late church services on January 9, 2011, and again on January 16, 2011. The Committee will have an informational meeting between the two services in the Fireside Room on January 16, 2011.

In reviewing the floor plans, please be aware of what they are intended to be. The plans are mere ideas of a floor design to fulfill the physical mission which is *to create an atmosphere that accentuates the spirit of wholeness, unity, and intimacy through space, sight, and sound at Immanuel*. The plans are not ideas to incorporate the technical placement of various items within any selected floor plan, like lighting location and type, sound placement and type, or even color.

As to where we go from here, it is *your* decision.

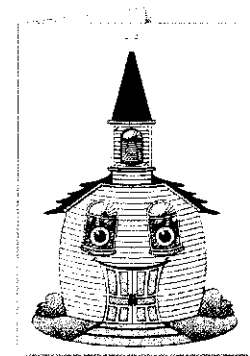
It is envisioned that should the Council and the Congregation desire moving forward to achieve the Physical Mission Statement, the Congregation will be asked at the 2011 Congregation Meeting: (1) to approve 1 or 2 of the floor plans (or a revised floor plan); (2) to approve a budget for the

development of architectural and mechanical drawings of the approved plan(s); and (3) to authorize the Committee to continue work with the Congregation and with architects/consultants to develop the necessary plans to present to the Congregation at the 2012 Congregation Meeting. Should final plans be approved in 2012, it would be hoped that the Congregation will take the next steps necessary for implementation (or non-implementation) of the plans in whole or in part.

Some say we are "*The Church of Tomorrow*". If true, we are wise in planning for tomorrow.

With your prayers of support and with your continued assistance, please join us in continuing our planning for tomorrow so that *we can create an atmosphere that accentuates the spirit of wholeness, unity, and intimacy through space, sight, and sound at Immanuel*. We welcome your further input/comments.

Alan Schroeder, Chair of the *Rejuvenation Committee*
Lynnette Chandler, *Committee Member*
Amy Dockter, *Committee Member*
Kirk Higginson, *Committee Member*
Rod Miller, *Committee Member*
Ken Wiley, *Committee Member*



Organ and Choir Loft

Dear Friends in Christ,

I am privilege to bring you the first in an eight part series of articles about various “physical elements” within Immanuel.

As many of you may be new to Immanuel within the last ten or twelve years, I should briefly summarize the history of the “Organ Project”, how and why it began, and what has been accomplished to date.

In 1998, Don Oakes, former Immanuel Organist, was hired as a consultant to address the challenges with the organ and to also make some recommendations on enlarging the instrument. It seemed logical to hire him as he had overseen the original organ installation in 1960 as well as the tonal revision and enlargement in 1974 which is how we see and hear the organ today. Don had a vision of what the instrument could or should be, and based the tonal recommendations on that vision. The report by Don Oakes was given to several organ builders including Balcom and Vaughan Pipe Organs (the organ builder that made the tonal revision in 1974 and who currently maintains the organ) who agreed with all the recommendations and included some additional items.

In addition to the tonal recommendations from the consultant, other challenges either existed or exist with the organ which is the “why” the “Organ Project” began. At the direction and blessing of the Congregation, an Organ Task Force was formed to address these challenges and fund raising began. Among the challenges were:

Antiquated relay system (this is the electrical system that sends a message to a pipe valve to open when a key on the console is depressed); the relay system was replaced with a modern solid state system in 1996

Re-leather pipes (these are pouches that are glued in the wind chests underneath each pipe and seal the air flow to each pipe); the pipes in the Swell Chamber (enclosed chamber) have been re-leathered in 1994, however the pipes in the Great and Pedal divisions (unenclosed) have yet to be re-leathered. Consequently, there are quite a few pipes that are dead (do not speak). Some of the dead pipes have not spoken since I became organist some 28 years ago!

Outdated and unreliable organ console – this was replaced with the new three-manual organ console in 2005

New 2 Rank Mixture Stop – the pipes and wind chest for this organ stop were donated by Immanuel member Griff Bratt from his house organ. It is installed in the Swell (enclosed chamber). It is in need of re-leathering as there are many pipes that do not speak. It should be noted, this donation results in one less needed stop from the consultant’s recommendation.

Continued next

Other challenges that should be addressed:

The organ speaks at head level into the ears of the choir members – some of the organ pipe sounds (stops) I am reluctant to use when the choir is present because of their brightness and the pipes’ proximity to choir member’s ears. I speak primarily of the Mixture IV on the Great (unenclosed) Division which lies adjacent to the men of the choir. This problem could be solved by raising the organ pipes so they are above the heads of our choir members.

The organ sound seems to decay at about 2/3 down the length of the Sanctuary which translates or means those that are sitting in the last third (front) of the Sanctuary do not or will not hear the organ the same as those in the first two thirds. This could be debated as we all hear differently regardless of where we are seated in the Sanctuary. Some possible solutions to this would be to replace some of the existing zinc pipe work (used as a cost cutting measure) with lead or spotted-metal or new wood constructed pipe work, particularly in the low or bass part of the organ, to give a more solid sound that carries more effectively. Secondly, rearrange the location of the pipes so the smaller pipes (higher pitched and brighter sounding) are at the back of the organ and larger pipes in front. This will lend to a better overall ensemble. The new pipe layout will also improve maintenance access keeping pipes of the same rank on the same wind chest. Currently, several of the pipe ranks are scattered about the organ. Third, construct an organ case to enclose the pipe work. The organ case not only would serve as a sounding board to help project the sound, but would protect the organ pipes from persons accidentally bumping them and debris falling into the pipes. It should not be a surprise the items we have found in the unprotected pipes.

I must also mention (not a problem with the organ) the choir loft structure. Several years ago, a structure study was done by engineers. Actual calculations were not figured, however it was determined some structure work would have to be accomplished if more pipes were added to the organ. According to the engineers and architects, the solution was relatively simple. One other solution would be to move the organ to the front of the Sanctuary (just a thought to ponder).

In conclusion, I would like to say something about aesthetics. If you are like me, what is the first thing to view when visiting a new church sanctuary? My eyes are usually directed first to the altar area, but then I look for organ pipes. I am always impressed with congregations that place such a high value on music to have a pipe organ and also use the organ as it is intended. When I see an organ with pipes systematically placed in casework so to appear like the organ is part of the building architecture is certainly a reflection of that congregation’s thoughts, traditions and feelings with respect to music. Immanuel can pride itself with a long tradition of good music, and of being the only Lutheran Church in Boise with a pipe organ. I am excited for what the future may bring for this “rejuvenating” process in all the areas to be explored and know the decisions or recommendations made will affect Immanuel for many generations to come.

Kirk Higginson

Heating, Air Conditioning, Electrical and ADA

Dear Friends in Christ,

I am privilege to bring you the second in an eight part series of articles about various “physical elements” within Immanuel.

These Rejuvenation Committee topics -- Heating, Air Conditioning, Electrical and ADA - deal with many of the things we experience at Immanuel but rarely see. In the winter the Sanctuary is warmer than outside; we plug in the coffee pots they begin to brew; a wheel chair bound guest finds many of our facilities inaccessible; in the summer the Immanuel Sanctuary can be uncomfortably hot. The following describes the challenges we encounter with the existing infrastructure of our Church:

Heating

The Immanuel Sanctuary is warmed by a gas fueled boiler built in prior to 1960. Given the boiler's age, there are a dwindling number of service companies with the skills to maintain the system. We experience periodic breakdowns and have been fortunate to find replacement parts, though this may not always be the case if we have a major problem. Our heating experts tell us that the efficiency rating of the boiler is well below the norm (estimated at below 40% and maybe even below 25%). We could likely reduce our monthly heating costs by replacing the boiler with an updated boiler system, which can be 95% efficient. Geo-thermal is an option being investigated, though currently Boise's geo-thermal line does not extend to Immanuel's location.

Air Conditioning

Other than the windows on both sides of the sanctuary, the fans mounted in the ceiling, and an exhaust fan located above the choir loft, we have no means to move or cool the air in the Immanuel Sanctuary. There are a number of alternative methods to cooling the Sanctuary, such as a centralized cooling system that distributes air through ducts under the sanctuary or installing duct-less systems in the walls.

Electrical Capacity

The infrastructure that distributes electricity through our building is at capacity. If you've ever brewed coffee in the kitchen, you know that plugging two coffee pots into the same outlet often means resetting a breaker. If we make any changes to the heating or air conditioning capacity within Immanuel we will have to upgrade our electrical services.

ADA

The American with Disabilities Act specifies minimum standards for accessibility to buildings and the facilities within. The stairs to Augustana make it virtually impossible for a wheel chair bound guest to attend services. Our main floor rest rooms in Immanuel are difficult to use and sometimes not usable at all by many with disabilities.

Your thoughts and comments regarding these topics are greatly appreciated. You will find more information about these topics and more in the overflow room display, or feel free to e-mail me at wileyken@yahoo.com.

Ken Wiley, member of the [Rejuvenation Committee](#)

Stained Glass Windows

The stain glass windows replaced amber windows during the 1980's. In 2003, classic paintings were placed above them. The artistic styles of each are beautiful and inspirational.

The original blue print for Immanuel's sanctuary included stained glassed windows behind the altar cross. Bids have been solicited for cost estimate to install a panel of stained glass in this location.

With the different styles of art in Immanuel sanctuary, there are questions to consider.

How do I feel when I enter the Immanuel sanctuary?

Do the windows and pictures enhance my worship experience?

Does the style of the windows and pictures go together with the overall style of the Immanuel Sanctuary?

Would stain glass behind the altar cross enhance the esthetic feeling of the Immanuel sanctuary?

Rod Miller, Rejuvenation Committee

Facilities for small children / Nursery/Cry Room

The Rejuvenation Committee is in the process of evaluating our facilities to support young families during worship experience. Many families have expressed interest in a child friendly space to take fussy children during the church service where they can still hear the activities of the worship service. Such a space may impact the design of the sanctuary.

Parking

Unfortunately, finding a parking space at worship time at Immanuel is often difficult. The chances of us purchasing a building to demolish for a parking lot are nil...for two reasons. The cost would be prohibitive, and it would not be allowed by the guidelines of the historic district.

We are in the process of obtaining a list of off street parking, i.e. Physician, dental, and attorney's offices that are nearby and are not being used on Sundays. The Baird Cleaners lot is close by and is frequently used by Immanuel members. If need be, in the future, shuttle services could be arranged for transportation from parking lots located further away. It is imperative that lack of parking not be allowed to affect church attendance. Do we need more handicapped parking spots? Any input regarding possible parking spaces will be appreciated.

Altar, Steps to Altar

Most of us are comfortable and familiar with the church of yesterday. Everything looks normal to us, including the altar. The challenge is looking at the church of tomorrow. As Lutherans we see God's presence as being close, not distant, not separate. Lets examine the position of the altar and its proximity to the community of believers. Ensuring ease of access (removing the four steps) to the altar should be a consideration in our assessing the physical structure of our existing altar.

Some have spoken of the lighting situation. While the Committee separately discussed this physical element a couple of weeks ago, it is part-and-parcel of the challenges facing our altar. Is the altar properly lighted so that the Congregation can reasonably see it, experience it, gain pleasure from it? And, is it properly lighted so that those who use it have reasonable lighting to assist in the service? I can share that for me, completing certain readings at the altar presents a challenge when the church service is at night or is during a cloudy day.

Some have even raised the possibility of having stained glass behind the altar, hanging the cross, or angling the pews, all in an effort to accentuate the spirit of unity through space and sight.

Any modifications the Congregation may decide to do to Immanuel's main sanctuary will be the church not only of tomorrow but hopefully for the next 50 years. The *Rejuvenation Committee* looks forward to a continuing dialogue with you so we can dream together about Immanuel as the church of tomorrow.

Alan Schroeder, Chair of the *Rejuvenation Committee*

Lighting

By now you have heard about the Organ, Choir Loft, HVAC, Electrical, ADA requirements, Stained Glass Windows & Paintings, and the Quiet Room-Nursery. Now it is time to talk about how you are able to see all of these things - Lighting.

The lighting for Immanuel and Augustana consists of various sources. There are incandescent fixtures in most locations, fluorescent light fixtures in other areas, and additional types of lighting existing on the exterior of the building. All of this lighting contributes to the atmosphere of our worship spaces. Many of the incandescent fixtures in both facilities have been retrofitted with compact fluorescent lamps, which are more energy efficient to run than incandescent lamps. Even though this has reduced the energy consumption, there are still areas which need attention. Reducing energy is but one component to consider where lighting is concerned.

The main sanctuary in Immanuel is illuminated with fixtures which do not distribute the light effectively to the area. The existing light fixtures have sentimental meaning to several people, but, the lighting levels are not adequate for people to read, unless you are close to or directly under the fixtures. The lighting should be even throughout the space. New fixtures will greatly improve the light distribution and would be selected to physically complement the structure and space. Other areas of the building would not take the same amount of analysis to improve the lighting and could be implemented without a high dollar cost.

Lighting can be very subjective but with considerations to light levels and architecture, and remembering the importance of the building and its function, a comprehensive analysis is recommended. Please take a look at the lighting the next time you attend worship and think, 'How could this be better'?

Your thoughts and comments are greatly appreciated.

Amy Dockter, member of the Rejuvenation Committee.

CRIS Sound and Projection Technology

Dear Fellow Members of Immanuel,
Have you experienced different uses of technology during a worship service that you enjoyed? Have you seen different methods of communicating with the congregation that reached you more effectively? Have you noticed that some of our existing audio/visual technology needs repair or upgrading? If so, the Rejuvenation Committee is interested in hearing from you. Below I list a few of the ideas that have been brought to our attention. Maybe you have other ideas? Or, you want to express your perspective on these topics. We would love to hear from you.

- | | |
|---------|---|
| Sound | Is our sound system effective? Can you always hear everyone? Are there aspects of our sound system you would want to fix, change or upgrade? Have you heard from other parishioners that they have a hard time hearing? Did you know Immanuel has "sound boosting" devices available in the pews toward the front left of the Sanctuary – does anyone use them? |
| Visual | Have you participated in a worship service where the Liturgy was projected onto a screen? Did you find that added or detracted from your worship experience? Would projecting the sheet music of each hymn make it easier to sing along? |
| PodCast | Would you take advantage of an archive of Pastor's sermons on your ipod? Have you ever wanted to share a sermon with a friend? |
| WebSite | Does our website contain what you expect? Should we have past copies of newsletters? Would our message reach more if we linked it to other websites in the community? |

What other ideas might you have that you'd be willing to share with the Rejuvenation Committee? We maintain a suggestion box in the overflow room just east of the Immanuel Sanctuary, please drop us a slip of paper with your ideas. Or, feel free to e-mail me at wileyken@yahoo.com

Yours in Christ,
Ken Wiley, member of the Rejuvenation Committee

(ri jóovə náyshen comm mit tee) – a group chosen to educate, gather information and provide a range of recommendations as to the physical elements within Immanuel's main sanctuary by the 2011 Annual Congregational Meeting.

Photos of Church in Jerome



Photo of a new church in Jerome, Idaho

Photos of Sacred Heart

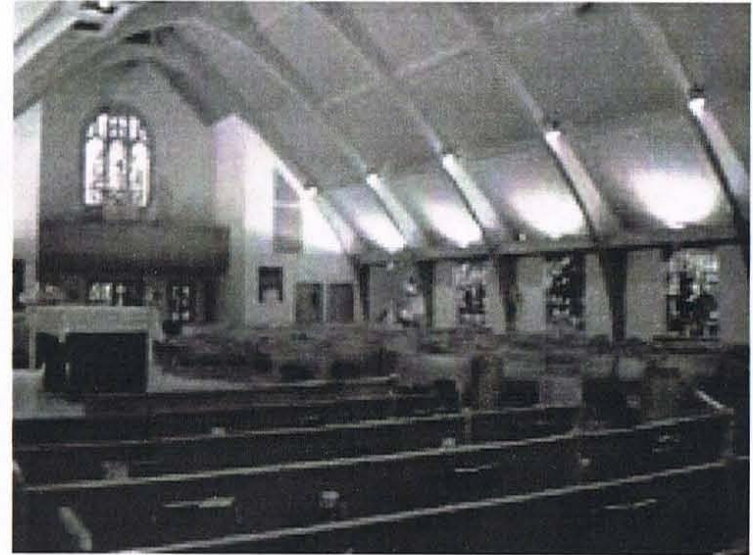
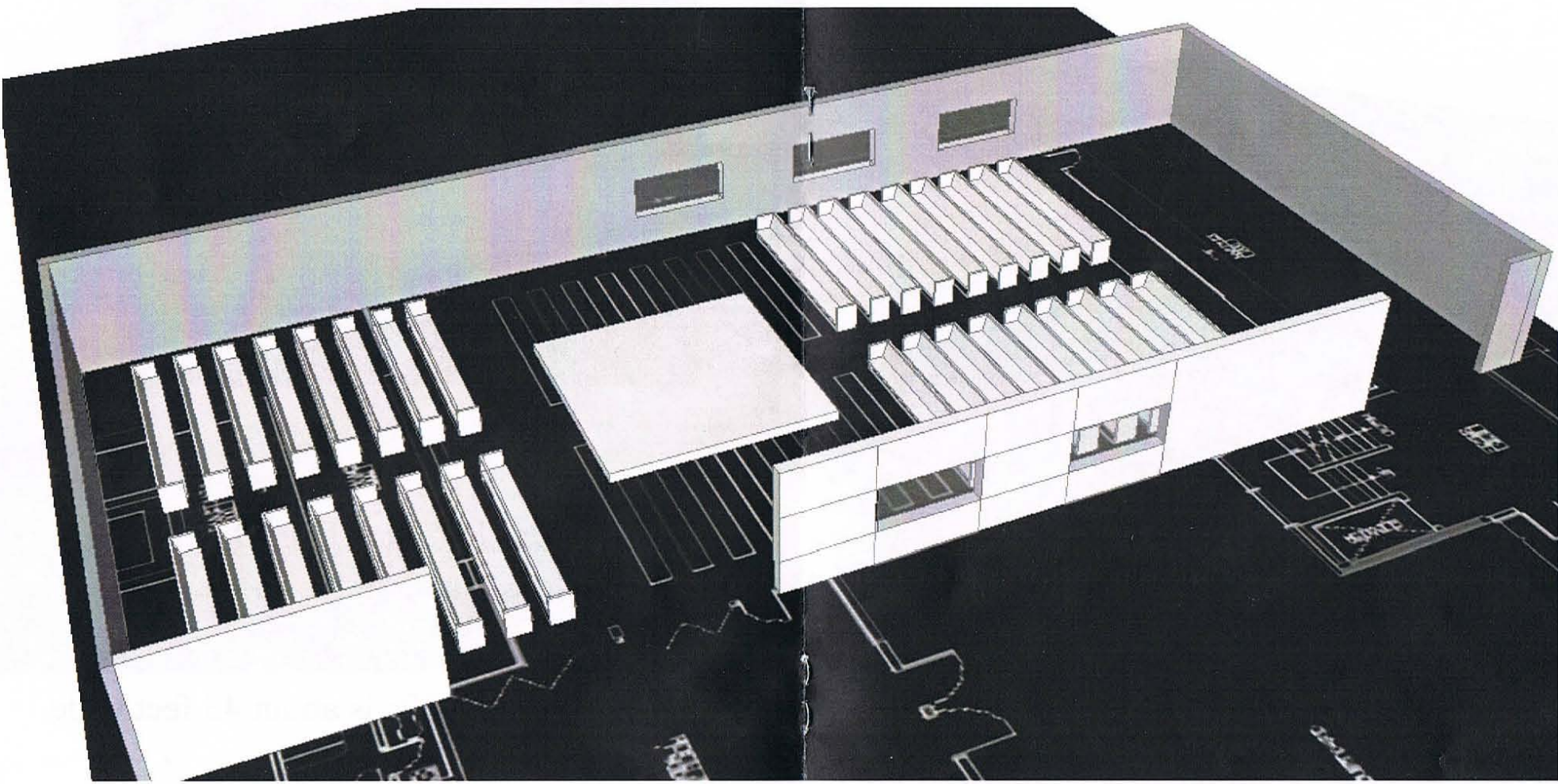


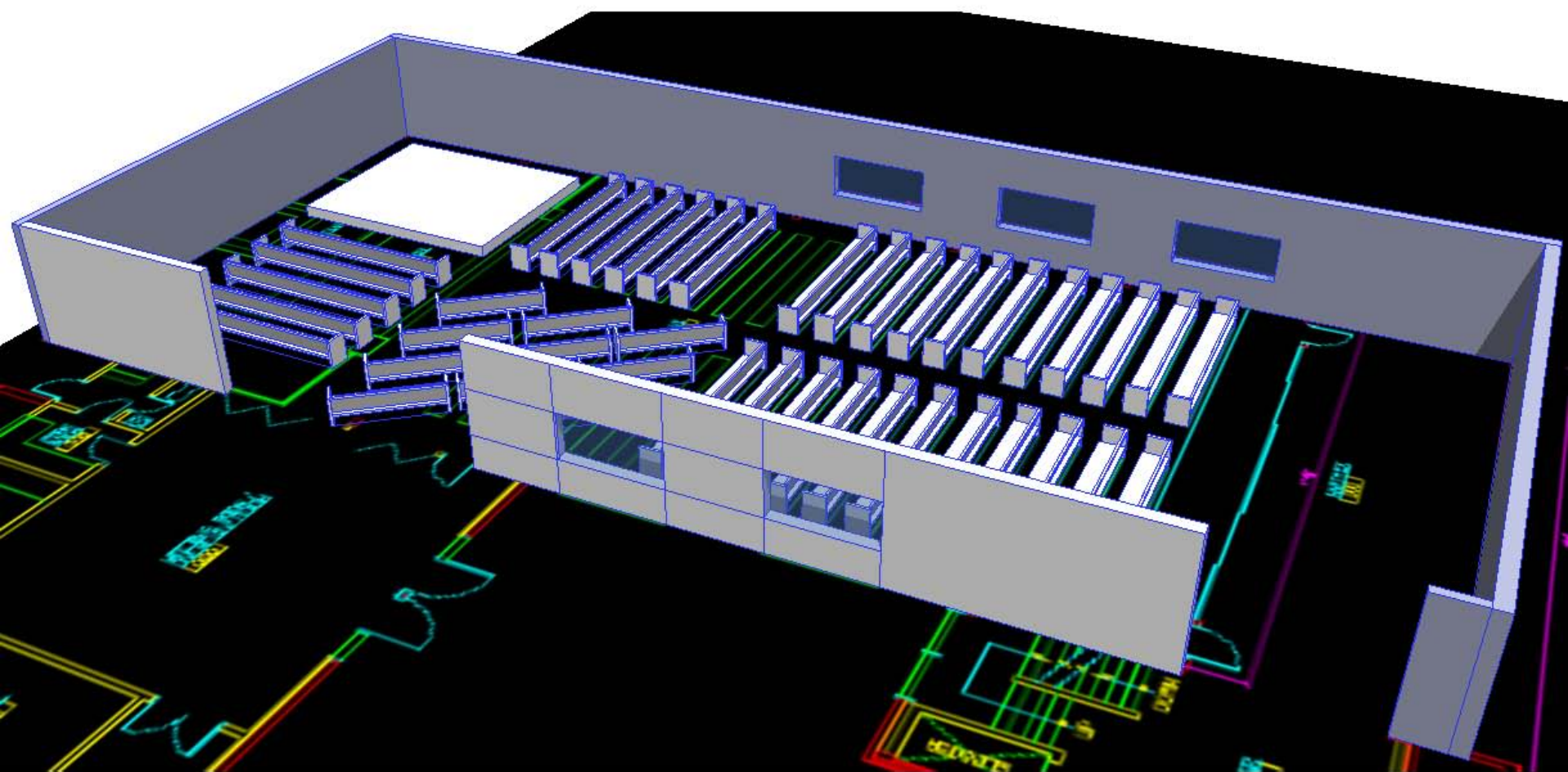
Photo of Sacred Heart Boise, Idaho, which changed from a floor plan like Immanuel to a floor plan like Idea #4.

Please note that Sacred Heart is about 75 feet wide, while Immanuel's is about 45 feet wide.

Idea #1

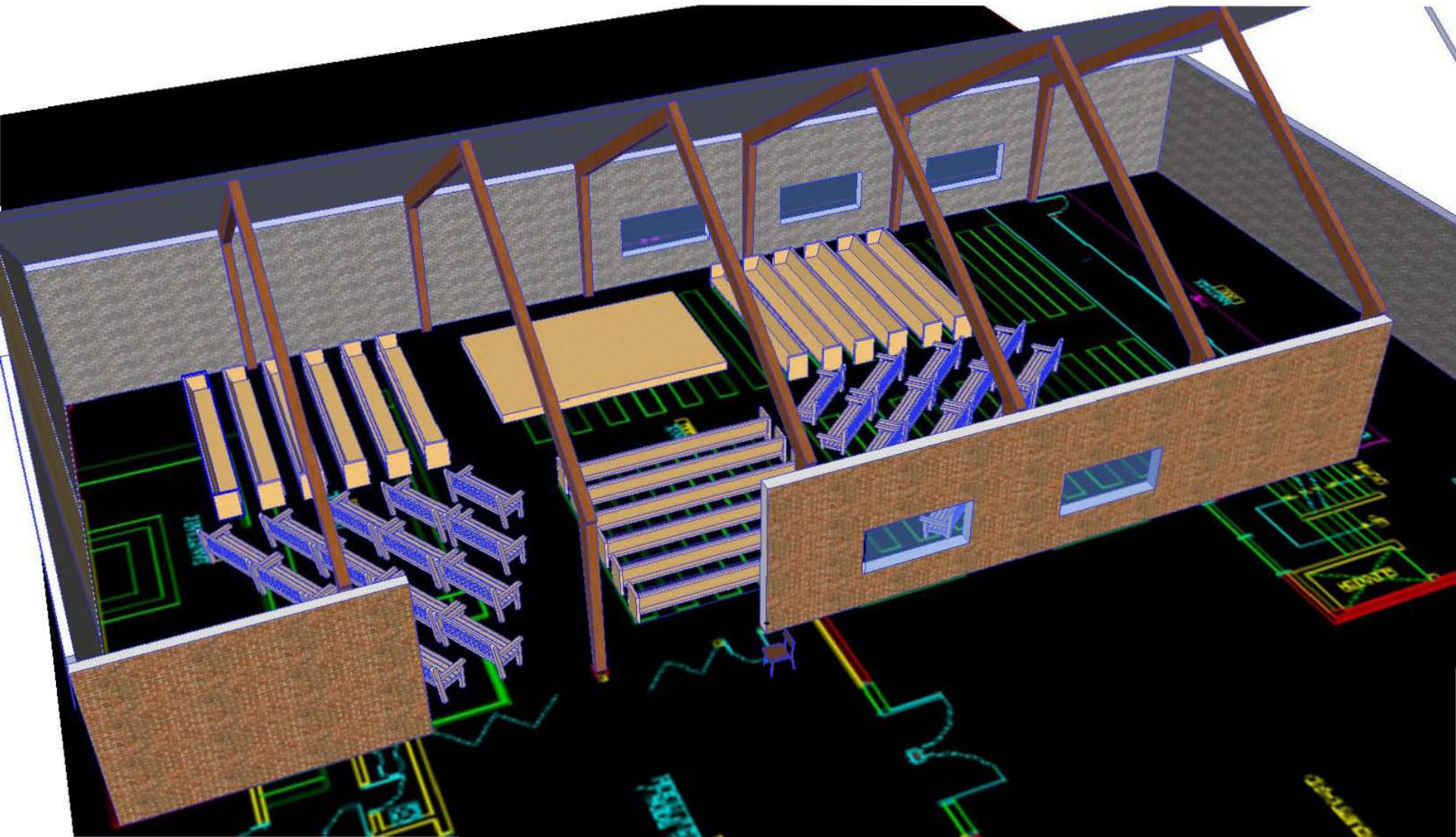


Alter in South West Idea #2



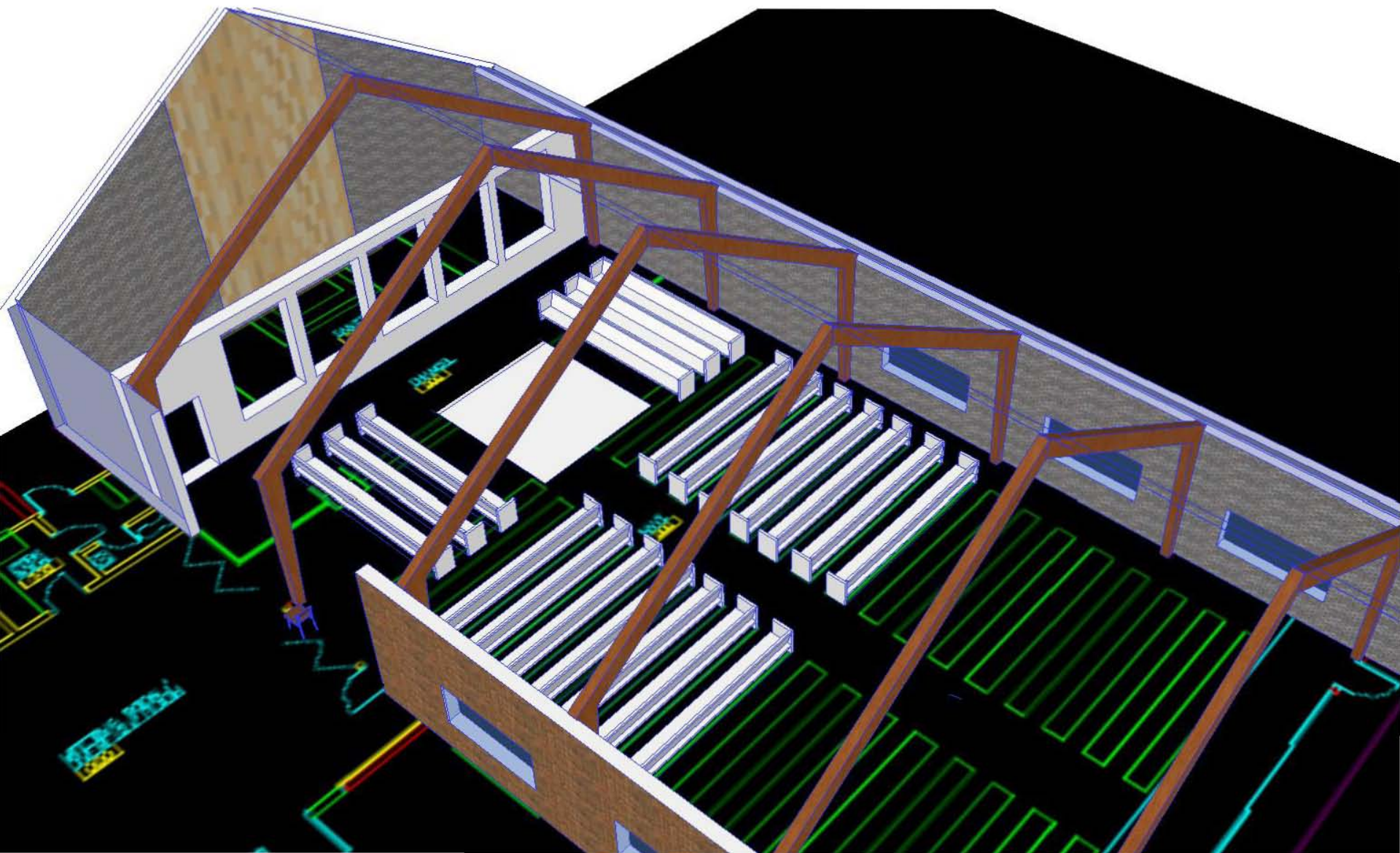
Alter Center West

Idea #3



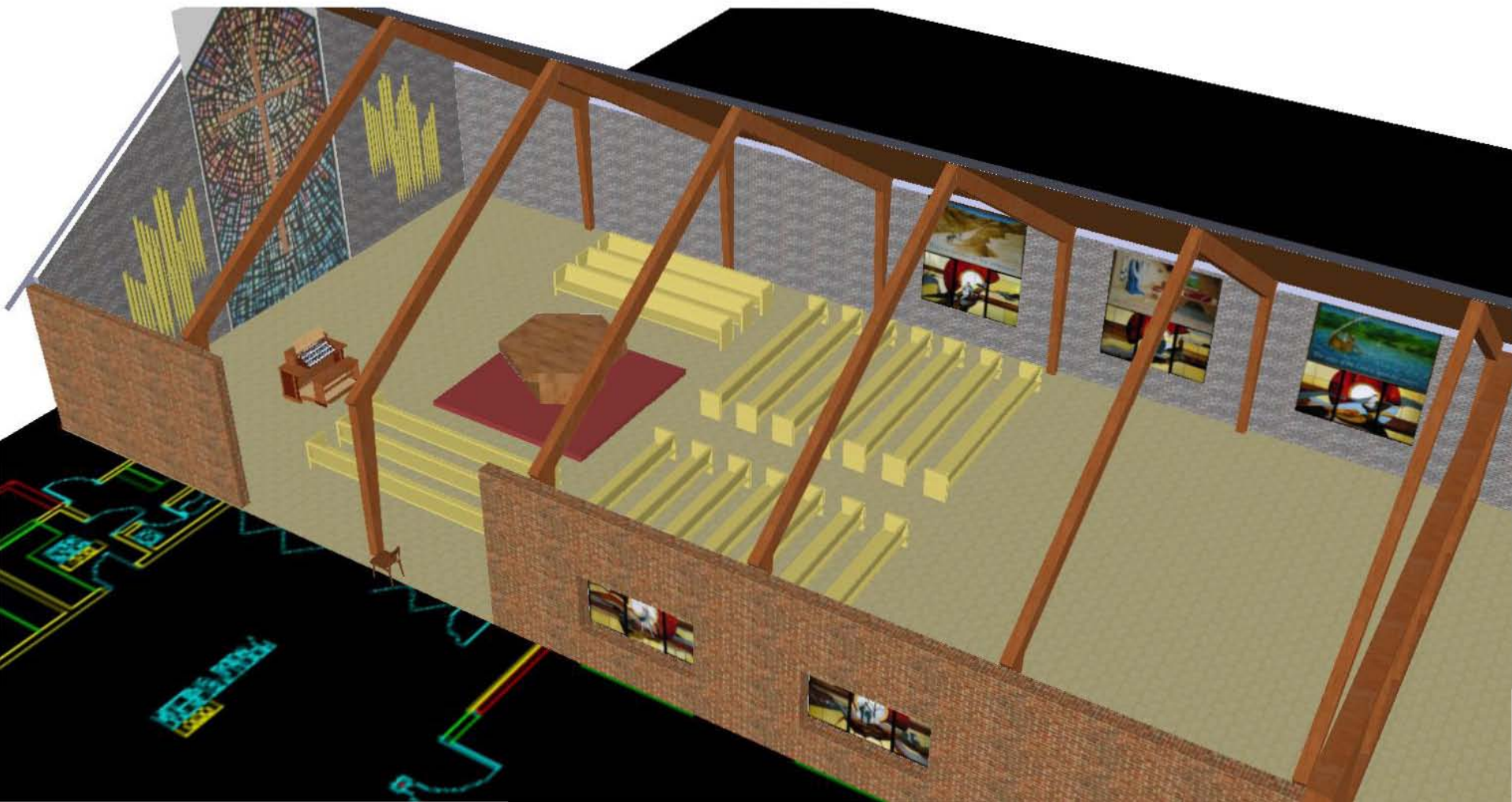
Cry to the South

Idea #4



Organ to the South

Idea #5



Idea #5 - Continued



The Rejuvenation Committee

Contact Information

*Please feel free to contact any of the
below listed members with
your feedback*

Alan Schroeder, *Chair of the Rejuvenation Committee*

djschroeder@live.com

860-9541

Lynnette Chandler, *Committee Member*

850-9420

lynnetto@cableone.net

Amy Dockter, *Committee Member*

373-5816

dadoc@msn.com

Kirk Higginson, *Committee Member*

841-2622

lkhiggy@cableone.net

Rod Miller, *Committee Member*

424-1337

rlmiller952@msn.com

Ken Wiley, *Committee Member*

331-0709

wileyfamily@cableone.net

Please see the full color
representations
of the floor plans
we have been
considering.

Display is located in
the Overflow room of
Immanuel.

Rejuvenation Committee Mission Statement

"To create an atmosphere in
Immanuel accentuating the
spirit of wholeness, unity,
and intimacy through space,
sight, and sound."