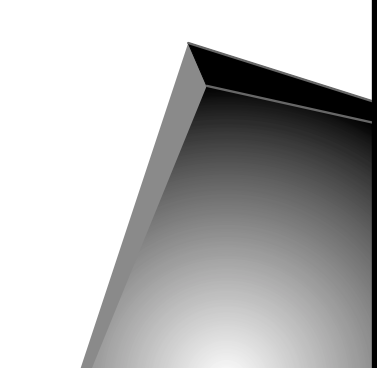


EXISTING FLOOR PLAN
FIRST FLOOR PLAN

No.	DATE	Revision Notes	Zone

**IMMANUEL LUTHERAN CHURCH
 REMODEL**

**TREYHOFF
 ARCHITECTURE**
 The Waterfront
 3025 Lake Harbor Lane
 Boise, Idaho 83703
 208.336.5510

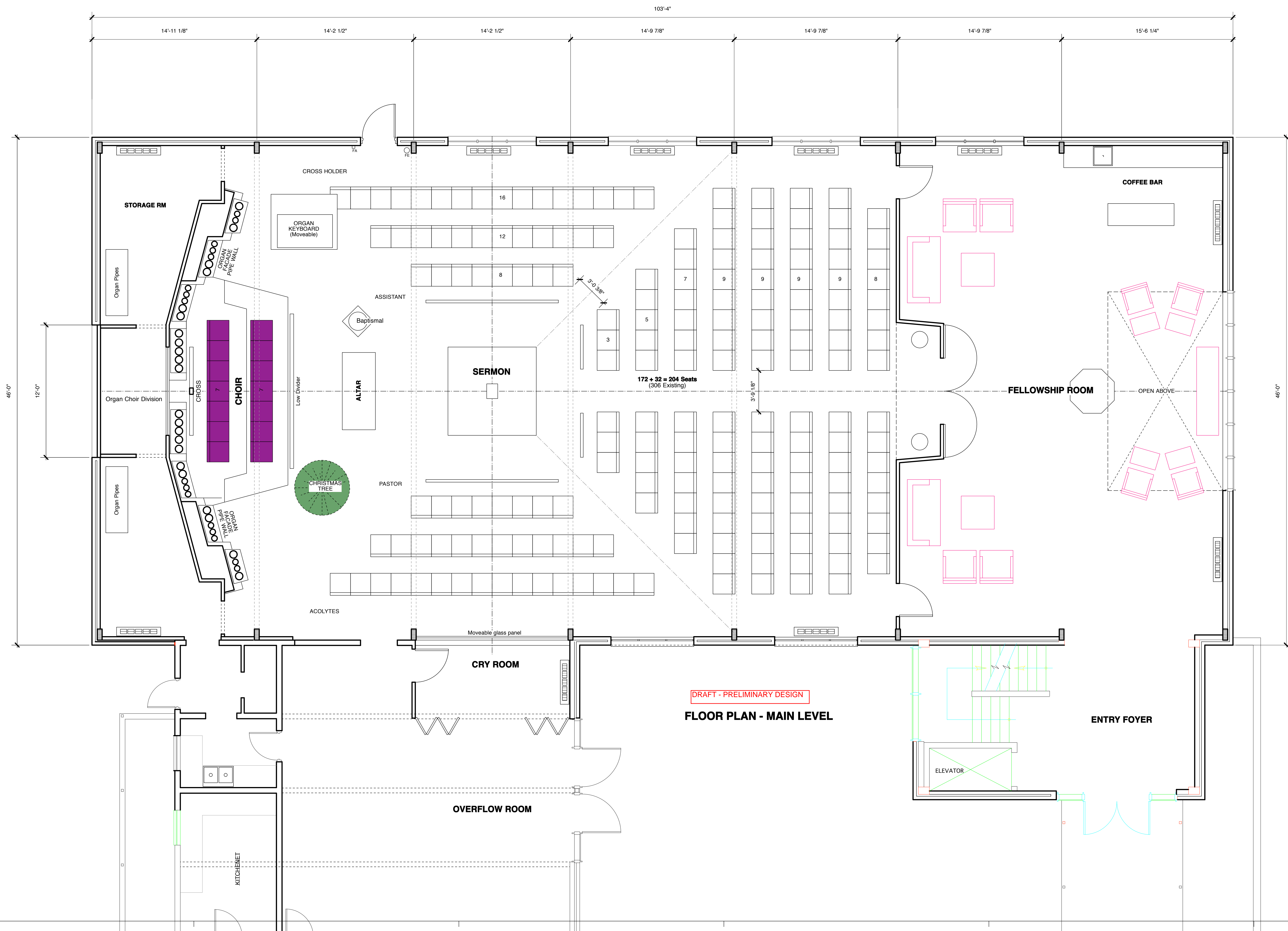


DESIGNED BY	T Hoff
DRAWN BY	T Hoff
CHECKED BY	
PLOT DATE	Dec. 15, 2011
REVISED PLOT DATE	
SCALE	1/8" = 1'-0"
PROJECT NUMBER	2011.12
CAD FILE NAME	

In the performance of professional services the application of professional judgment is required. The preparation of these documents does not imply that all details and specifications are covered. The Contractor is required by the general conditions of contract to provide all materials and equipment that reasonably could be inferred from the contract documents, or from prevailing custom or trade practices, as being required to produce the intended result whether or not specifically designated.

DRAWING NAME
**FLOOR PLAN
 MAIN LEVEL**

SHEET
**A
 2.0**



No.	DATE	Revision Notes	Zone

**IMMANUEL LUTHERAN CHURCH
REMODEL**

TREYHOFF
ARCHITECTURE

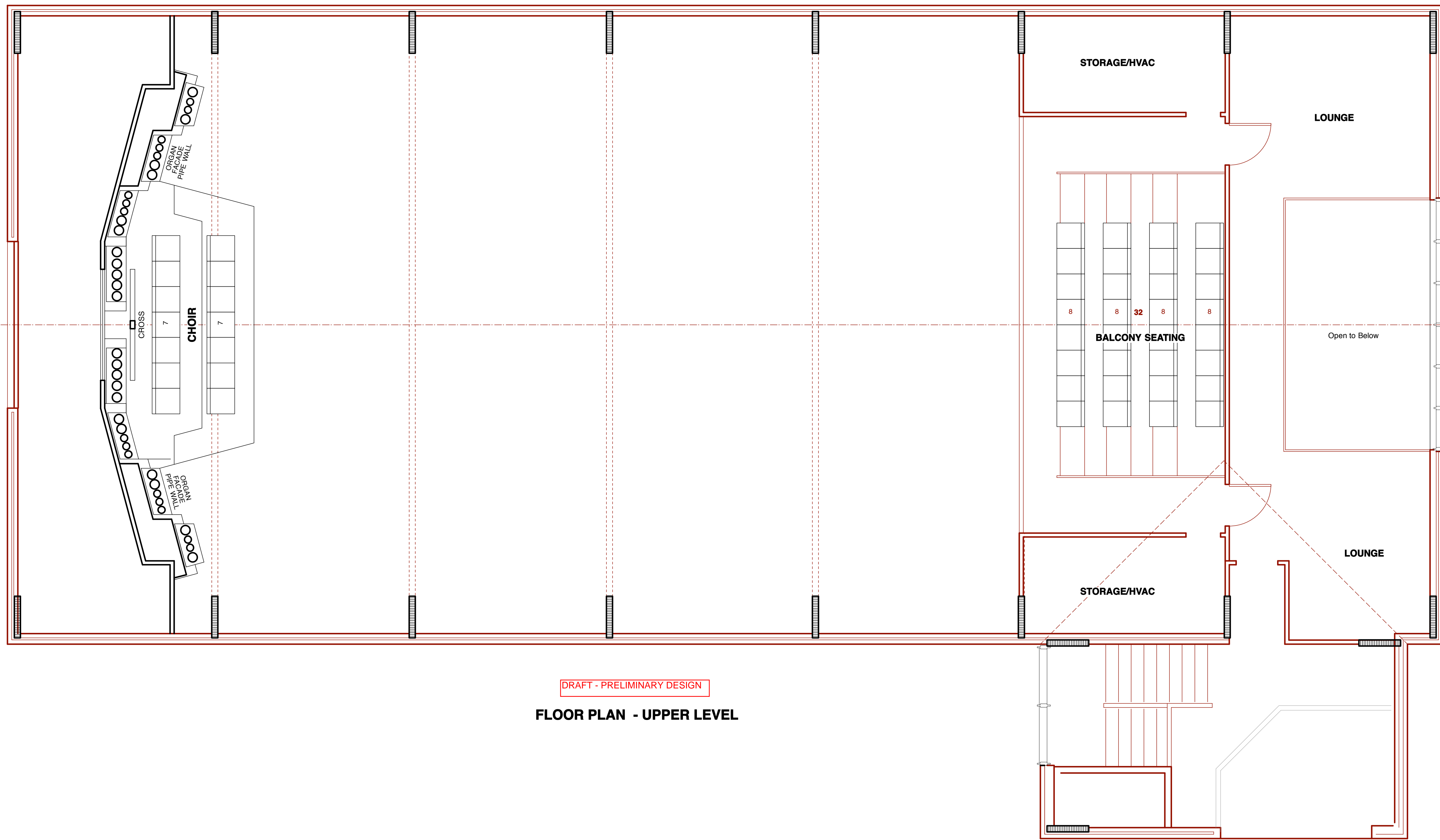
The Waterfront
3050 Lake Harbor Lane
Suite 200
St. Louis, MO 63103
208.336.5510

DESIGNED BY	T Hoff
DRAWN BY	T Hoff
CHECKED BY	
PLOT DATE	Dec. 15, 2011
REVISED PLOT DATE	
SCALE	1/4" = 1'-0"
PROJECT NUMBER	2011.12
CAD FILE NAME	

In the performance of professional services the application of professional judgment is required. The preparation of these documents does not imply that all details and specifications are covered. The Contractor is required by the general conditions of construction contracts to perform work and to furnish materials and equipment that reasonably could be inferred from the contract documents, or from prevailing custom or trade practices, as usage, or otherwise. It is the Contractor's responsibility to verify or not specifically designated.

**FLOOR PLAN
MAIN LEVEL**

**A
2.1**



DRAFT - PRELIMINARY DESIGN
FLOOR PLAN - UPPER LEVEL

No.	DATE	Revision Notes	Zone

**IMMANUEL LUTHERAN CHURCH
 REMODEL**

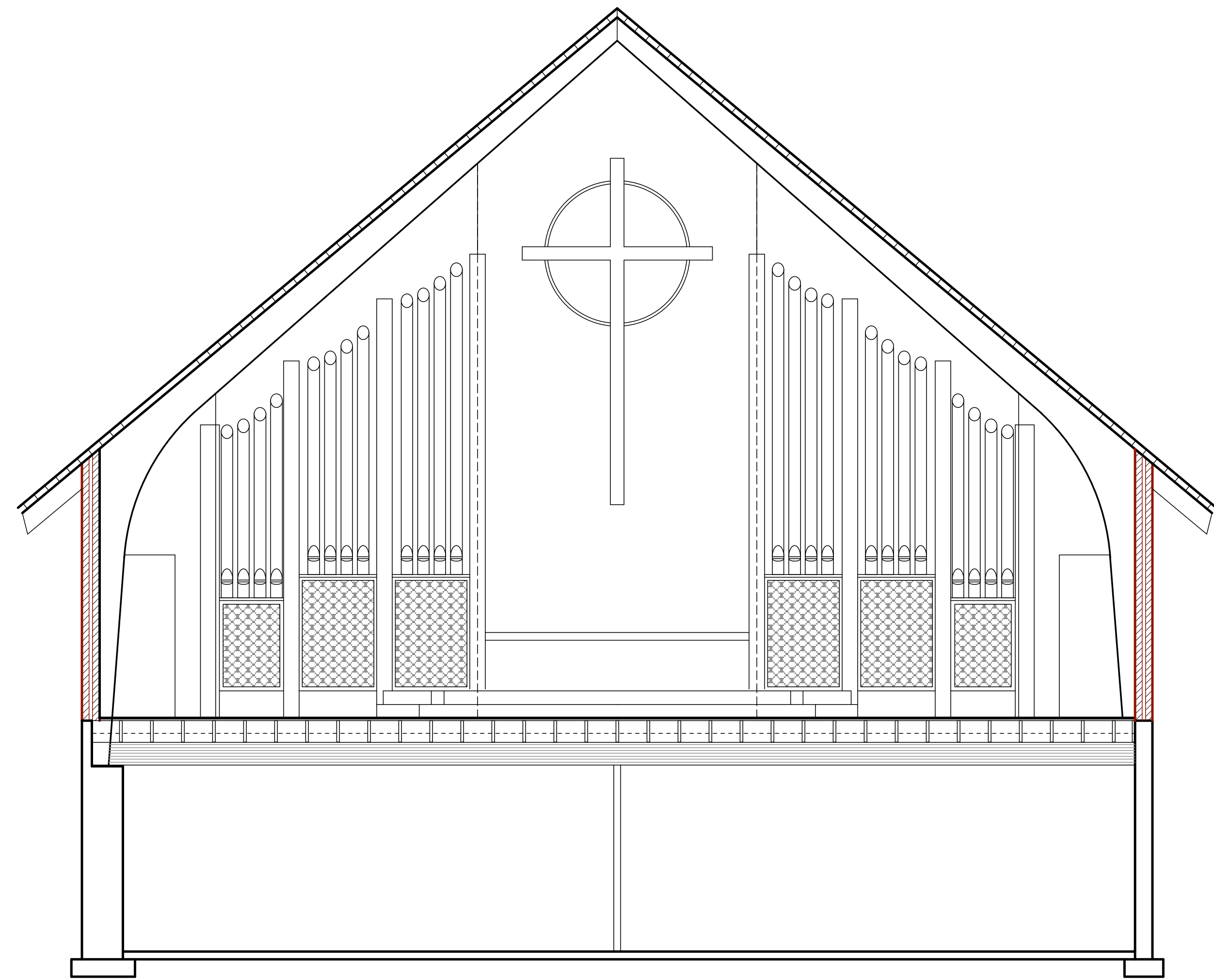
**TREYHOFF
 ARCHITECTURE**
 The Waterfront
 3350 Lake Harbor Lane
 Suite 200
 St. Louis, MO 63103
 208.336.5510

DESIGNED BY	T Hoff
DRAWN BY	T Hoff
CHECKED BY	
PLOT DATE	Dec. 15, 2011
REVISED PLOT DATE	
SCALE	1/4" = 1'-0"
PROJECT NUMBER	2011.12
CAD FILE NAME	

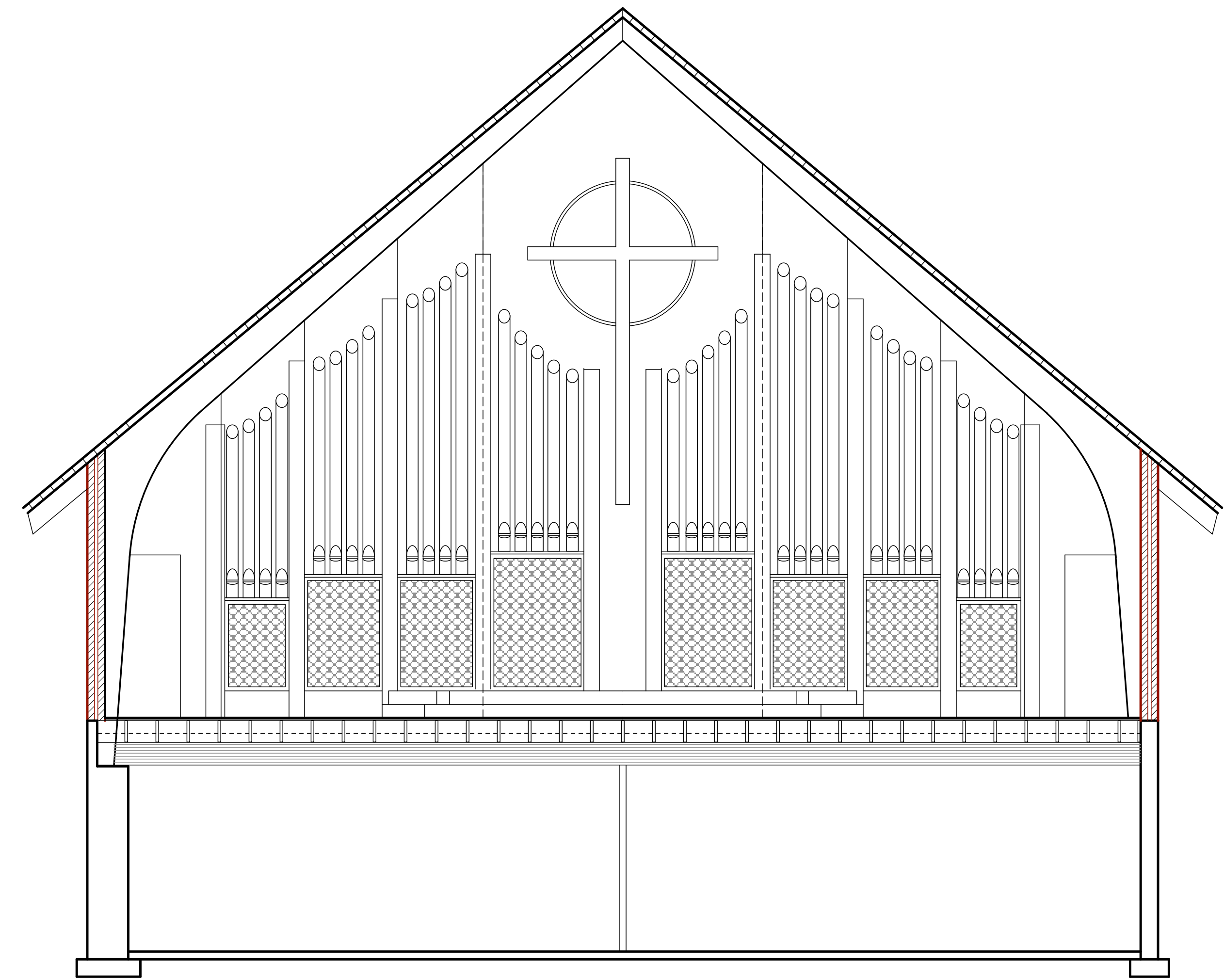
In the performance of professional services the application of professional judgment is required. The preparation of these documents does not mean that all details and specifications are covered. The Contractor is required by the general conditions of construction contracts to perform work and to furnish materials and equipment that reasonably could be inferred from the contract documents, or from prevailing custom or trade practices, or usage, or otherwise. We warrant and do not warrant whether or not specifically designated.

DRAWING NAME
**FLOOR PLAN
 BALCONY**

SHEET
**A
 2.2**

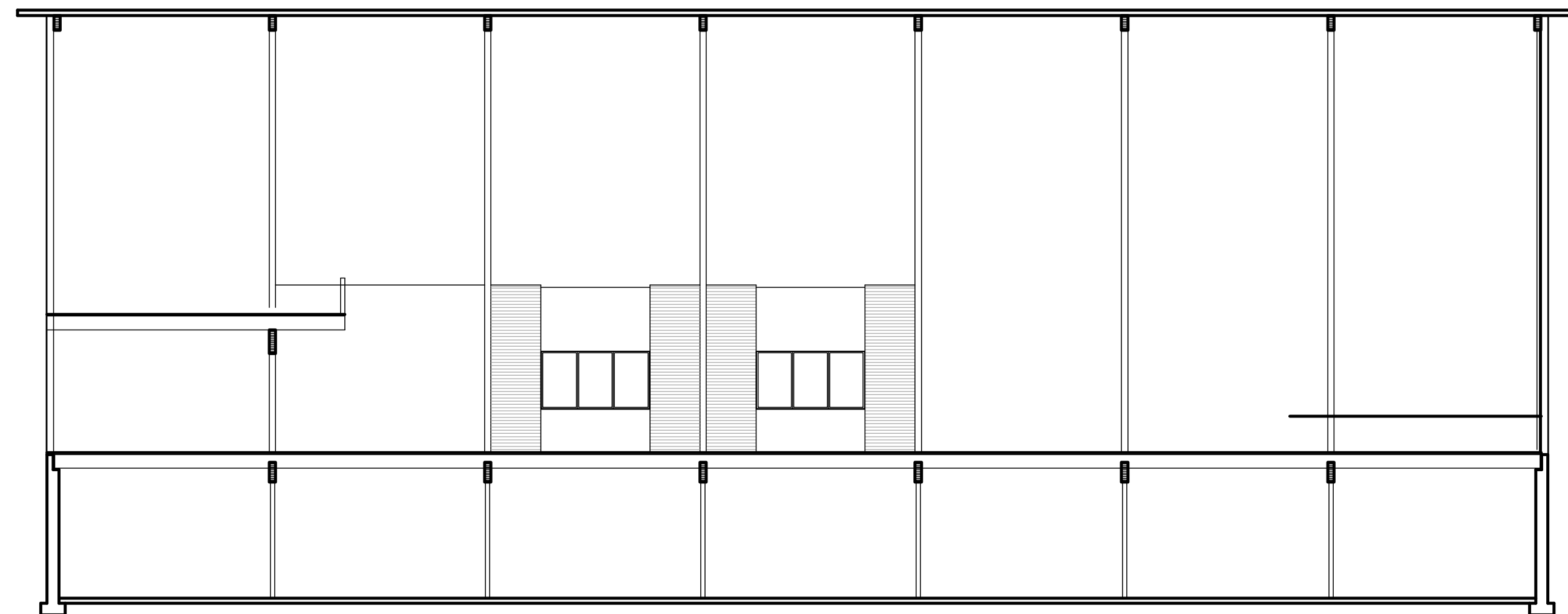


BUILDING SECTION



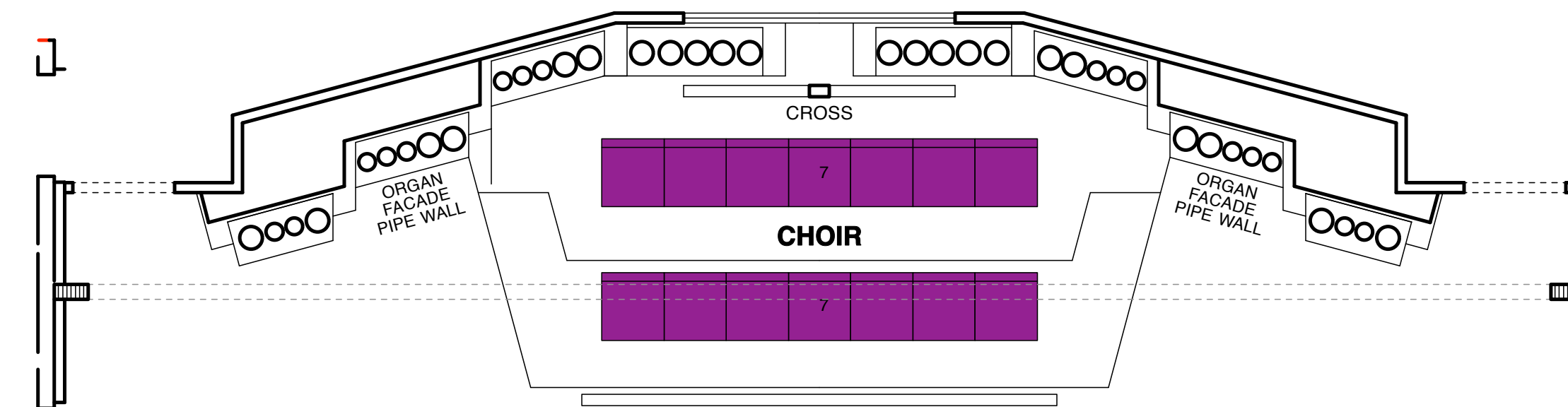
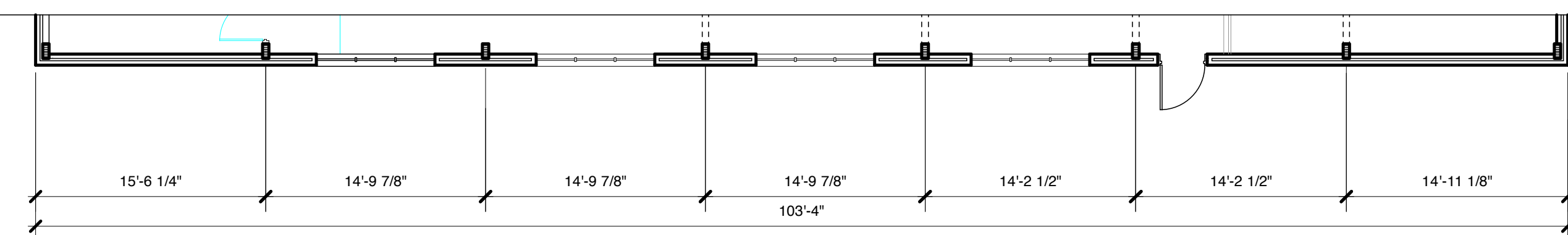
BUILDING SECTION

DRAFT - PRELIMINARY DESIGN



BUILDING SECTION

DRAFT - PRELIMINARY DESIGN



No.	DATE	Revision Notes	Zone

IMMANUEL LUTHERAN CHURCH
REMODEL

TREYHOFF
ARCHITECTURE
The Workfront
3350 Lake Harbor Lane
Suite 246, # 63703
208 586 5510

DESIGNED BY:	T Hoff
DRAWN BY:	T Hoff
CHECKED BY:	
PLOT DATE:	Dec. 15, 2011
REVISED PLOT DATE:	
SCALE:	1/4" = 1'-0"
PROJECT NUMBER:	2011.12
CAD FILE NAME:	

In the performance of professional services the application of professional judgement is required. The preparation of these documents does not imply that all details and specifications are covered. The Contractor is required by the general conditions of construction contracts to perform work and to furnish materials and equipment that reasonably could be inferred from the contract documents, or from prevailing custom or trade practices, as being required to produce the intended result whether or not specifically designated.

DRAWING NAME
BUILDING SECTIONS

SHEET
A
3.1

Preliminary Drawing Thoughts

of the initial draft preliminary design from Trey Hoff arising from a ReJuv Committee meeting with Trey Hoff on December 18, 2011

Sermon

- Raised, or not
- Rail, or not
- Implications
 - Communion flow?
 - Pastor's intimacy with the congregation [is it a monument he has to work around?]

Altar

- Existing Octagon, or not

Choir/Organ

- Likely need space for 40 members
 - 3 tiers?
 - When we have lots of folks we can stand to the left and right of the fixed locations.
- Can we move the whole Choir/Organ assembly closer to the South wall?

Seating

- The second version [A 2.1] where there are more seats East and West was preferred.
- Have a mix of chairs [toward the front] and existing pews [toward the back, North].
- Partitions at the feet of the front rows, or not?

Fellowship Room

- Use a "moveable partition wall" that can be retracted to open the space between the Fellowship Room and the Sanctuary.

Balcony Seating

- A place for existing pews?
- Glass wall/windows to allow light from North wall into Sanctuary.



Interior Design

- Cover existing brick with drywall, then paint

Lighting

-

Heating / Air Conditioning

- Use "Daikin" system. Fixtures where existing steam radiators sit.

- Air conditioning would require:
 - Compressor units; either outside or behind the Chior [South Wall]
 - Running refrigerant lines from Compressor units to “radiators”
 - Lines would run under the Sanctuary, ceiling of the Fellowship Hall
 - We may need a “Energy Recovery Ventilator” to swap indoor air with outdoor air.
 - [Example](#), click to see

Insulation

Roof

- Frame [2x4, 2x6] a layer over the current, 24” on center and blow insulation between the joist.
- Hard foam insulation.
- In either case it would mean re-roofing.

Walls

- Hard foam on the outside, coated with stucco

ReJuv Committee will meet again in early January 2012 for a working session to re-review the initial draft preliminary design from Trey Hoff and to provide ideas for changes to the initial draft to hopes of providing another-updated version to the Congregation at the Church Annual Meeting on January 29, 2012.